

# CalMHSA BIENNIAL REPORT

2009 – 2011

## CalMHSA

California Mental Health Services Authority

## Structure

The California Mental Health Services Authority (CalMHSA) is an Independent Administrative and Fiscal Governments Agency focused on the efficient delivery of California Mental Health Projects. Member counties jointly develop, fund, and implement mental health services, projects, and educational programs at the state, regional, and local levels.

CalMHSA is not a legislative agency, nor are we an approval or advocacy body. We are a best practice inter-governmental structure with growing capacity and capability to promote systems and services arising from a shared member commitment to community mental health.

## Governance

Headed by a Separate Board of Members (of Mental Health Directors), an Executive Committee comprised of Officers and Statewide Region Representatives, the administrative firm of George Hills Company, Inc. who subcontracts with organizations including: California Institute of Mental Health (CiMH), and separate legal counsel of Murphy, Campbell, Guthrie & Alliston, CalMHSA operates within the statues governing Joint Powers Agreement (JPA) entities, and complies with the Brown Act open meeting requirements. The JPA is supported by stakeholders, strategic partners, and service providers and is guided by a Joint Powers of Authority Agreement and a set of approved Bylaws.

## CalMHSA Membership Map



## Officers

**Allan Rawland, MSW, ACSW**

President, CalMHSA;  
Director, County of San Bernardino,  
Department of Behavioral Health

**Wayne Clark, PhD**

Vice President, CalMHSA;  
Director, County of Monterey,  
Behavioral Health Division

**Maureen F. Bauman, LCSW**

Secretary, CalMHSA;  
Director, Adult System of Care

**Karen Baylor, PhD, LMFT**

Treasurer, CalMHSA;  
Administrator, County of San Luis Obispo,  
Behavioral Health Services

**John Chaquica, CPA, MBA, ARM**

Executive Director, CalMHSA;  
President, George Hills Company

**Edward Walker, LCSW**

Program Director, CalMHSA;  
George Hills Company

## Next Steps for 2011

### Suicide Prevention; Stigma & Discrimination Reduction; Student Mental Health

- January – February: RFP/RFA release
- March – May: Proposal/Applications Due — panel scores, staff analysis
- June – July: Board selects proposals/ applications for contract;

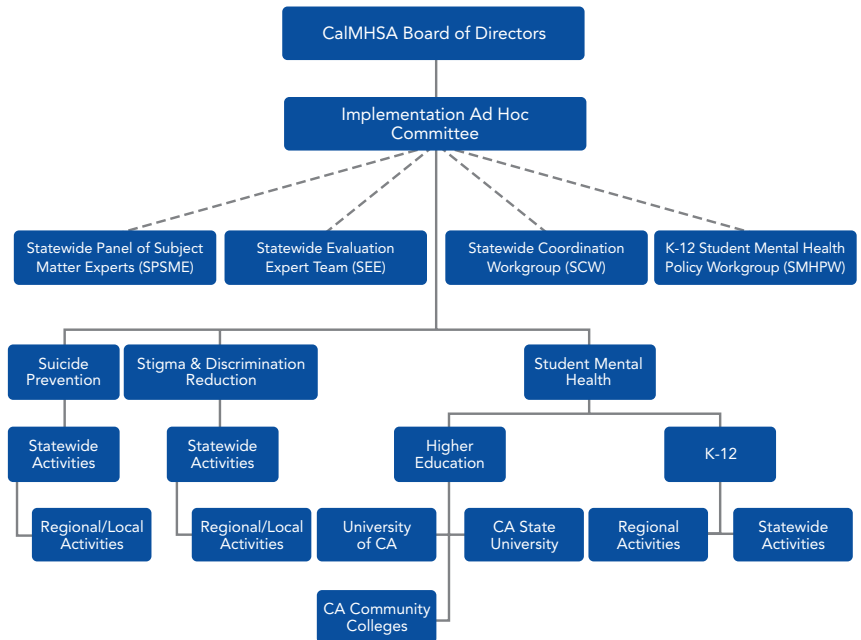
### Statewide Evaluation

- July – RFP release
- August – Proposals Due — panel scores, staff analysis
- September – Board selects proposal for contract

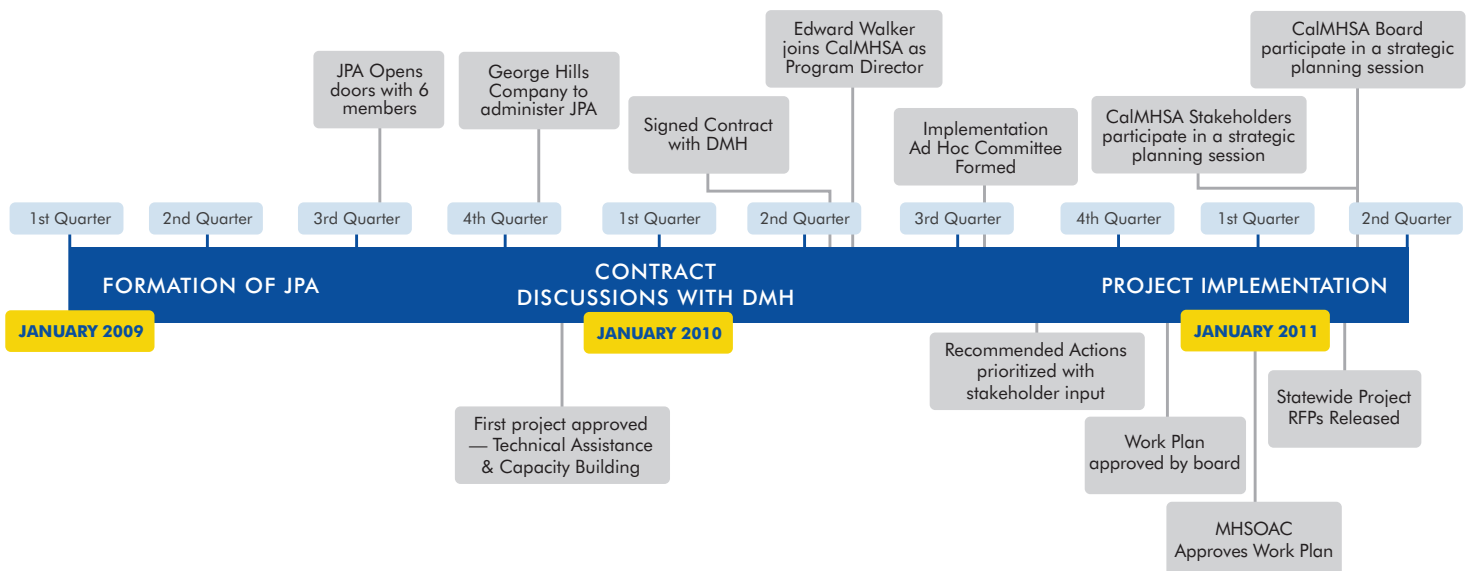
### Program Implementation Review

- Begins September 2011 — site visits; convene Statewide Coordinating Workgroup, Statewide, Statewide Panel of Subject Matter Experts, Statewide Evaluation Expert Team, SMH Policy Workgroup; establish protocols for evaluation data collection and progress reports

## Implementation of PEI Funds



## CalMHSa Timeline



# CaIMHSA BIENNIAL REPORT 2009 – 2011

SUICIDE PREVENTION	COMPONENT	PROPOSER	REGION COVERED
PROGRAM 1: Suicide Prevention Network Program (SPNP)	N/A	Didi Hirsch Psychiatric Services dba Didi Hirsh Mental Health Services	Statewide
PROGRAM 2: Regional & Local Suicide Prevention Capacity-Building Program (RLSPCB)	N/A	Transitions Mental Health Association	Southern: San Luis Obispo, Santa Barbara & Kern
	N/A	Didi Hirsch Psychiatric Services dba Didi Hirsh Menta Health Services	Southern and Los Angeles: Ventura, San Bernardino, Riverside, Orange, San Diego, Imperial and Los Angeles
	N/A	North Bay Suicide Prevention Project, Family Services Agency of Marin	Bay Area (North): Marin, Sonoma, Napa, Lake, Mendocino & Solano
	N/A	San Francisco Suicide Prevention	Bay Area: San Francisco, San Mateo, Contra Costa
	N/A	Family Services Central Coast	Bay Area: Monterey, Santa Cruz & Santa Clara
	N/A	Kings View Suicide Prevention Program	Central: Fresno, Madera, Merced, Stanislaus
	N/A	Institute on Aging Center for Elderly Suicide Prevention (CESP)	Central & Superior: Sacramento, El Dorado, Placer, Yolo, Sutter/Yuba, Amador, Butte, Colusa, Glenn, Trinity, Humboldt, Siskiyou and Modoc
PROGRAM 3: Social Marketing Suicide Prevention Campaign (SMSPC)	N/A	AdEase	Statewide
PROGRAM 4: Suicide Prevention Training & Workforce Enhancement Program	N/A	Living Works, Education, LP	Statewide

STUDENT MENTAL HEALTH INITIATIVE	COMPONENT	PROPOSER	REGION COVERED
PROGRAM 1: Statewide K-12 Student Mental Health	NA	California Department of Education	Statewide
PROGRAM 2: Regional K-12 Student Mental Health	NA	CA County Superintendents Educational Services (CCSESA)	Regional
PROGRAM 3: Student Mental Health California State University	NA	California State University	Statewide
PROGRAM 4: Statewide Student Mental Health California Community Colleges	NA	California Community Colleges	Statewide
PROGRAM 5: Statewide Student Mental Health University of California	NA	University of California	Statewide

STIGMA AND DISCRIMINATION REDUCTION	COMPONENT	PROPOSER	REGION COVERED
PROGRAM 1: Strategies for a Supportive Environment Program (SSEP)	One: Stigma & Discrimination Reduction Consortium	CA Network of Mental Health Clients	Statewide
	Two: Social Marketing	TBD	Statewide
	Three: Capacity Building	TBD	Statewide
PROGRAM 2: Values, Practices and Policies Program (VPPP)	One: Resource Development	Mental Health Association of San Francisco	Statewide
	Two: Partnering w/the Media and the Entertainment Industry	Entertainment Industries Council, EIC	Statewide
	Three: Promoting Integrated Health	Community Clinic Initiative	Statewide
	Four: Promoting Mental Health in the Workplace	None	Statewide
	Five: Reducing Stigma and Discrimination in Mental Health System Partners	NAMI California	Statewide
PROGRAM 3: Promising Practices Program (PPP)	N/A	Mental Health Association of San Francisco	Statewide
PROGRAM 4: Advancing Policy to Eliminate Discrimination Program (APEDP)	N/A	Disability Rights CA	Statewide



California Mental Health Services Authority

California Mental Health Services Authority  
 3043 Gold Canal Drive, Suite 200  
 Rancho Cordova, CA 95670

Office: 916.859.4800  
 Fax: 916.859.4805  
[www.calmhsa.org](http://www.calmhsa.org)