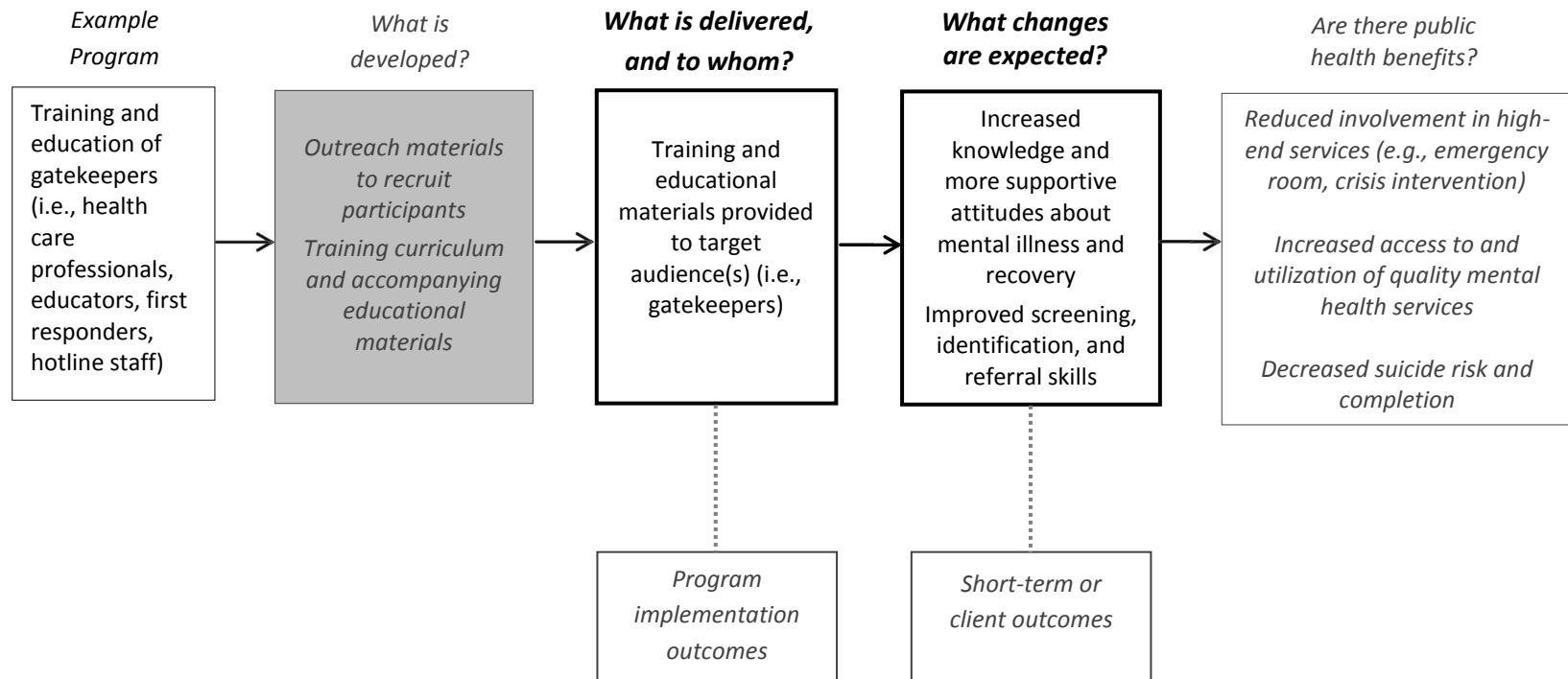
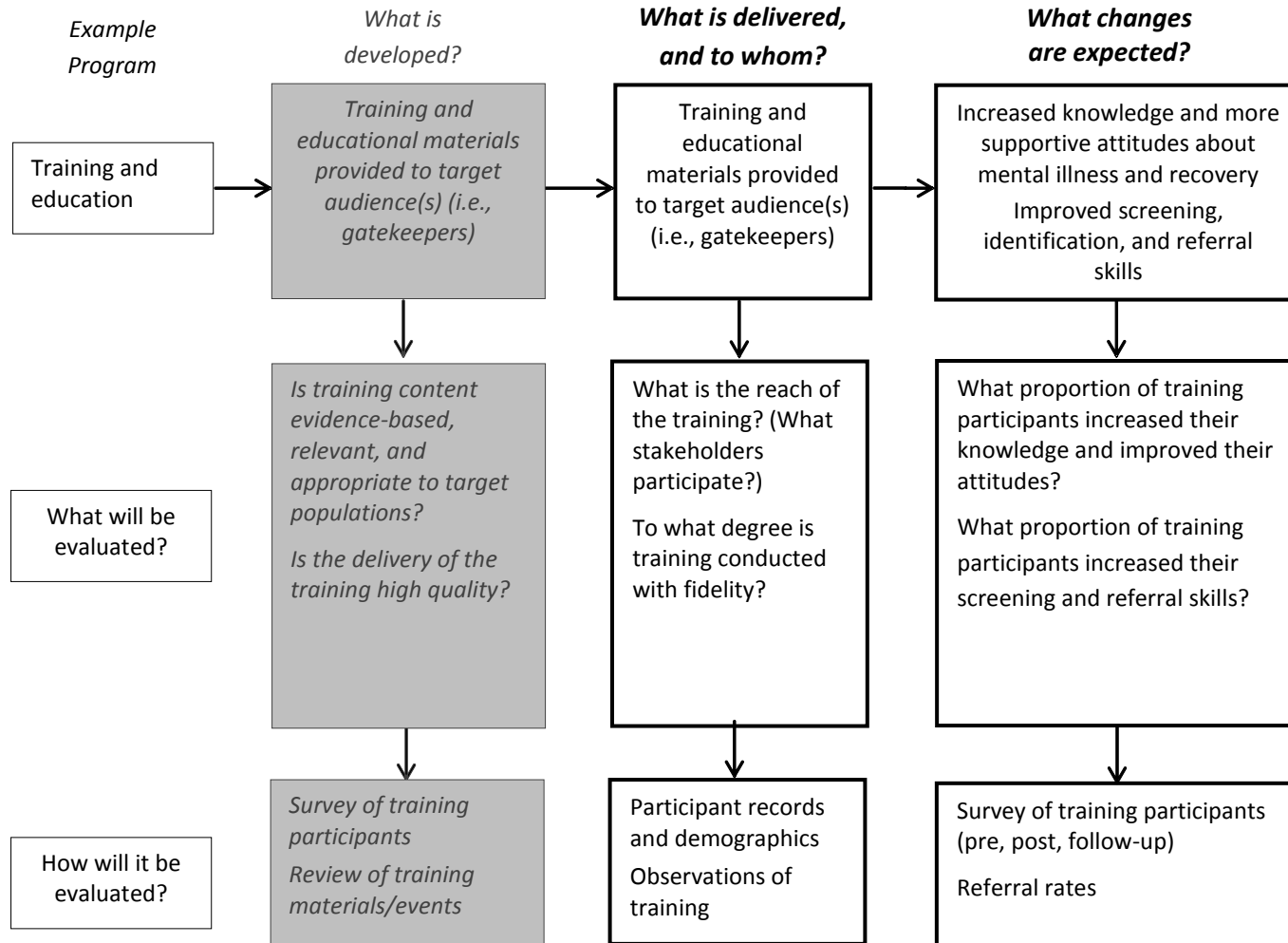


## Overview of Gatekeeper Training and Education and Evaluation Components



## Evaluation of Gatekeeper Training Services



## **Sample Program Descriptions**

### **Gatekeeper Training Services**

Training and education is provided to service providers, the schools, other system partners, gatekeepers, and the community at large. Training and educational strategies include the use of consumers, family members, system partners, advocates, cultural brokers, and others to identify and assist with mental health issues, to improve the effectiveness of services, and to reduce stigma and discrimination toward those living with mental illness.

### **Specific Services**

- Training and educational materials provided to target audience(s) (i.e., gatekeepers) in various formats (e.g., online, in person, train-the-trainer)